

Installation Instructions for Texture Accessory Part TA-RT-KIT

TA-RT-KIT – Rotary Base Table

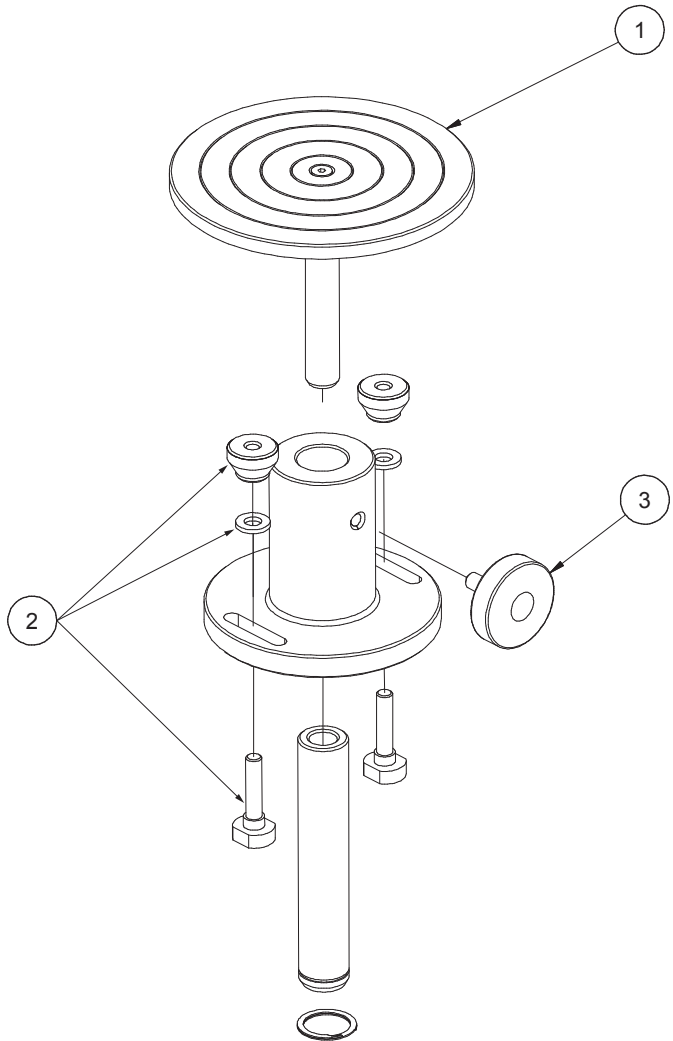
The Parts List identifies the components that come with the kit. Part numbers, descriptions and quantities of each are listed.

The Rotary Base Table comes fully assembled. The assembly drawing shows how the parts go together. The advantage of using this table is the ability to position it very quickly so that the sample material is close to the test probe. This minimizes the wait time after the start of the test for the probe to make contact with the sample.

The Rotary Base Table attaches to the CT3 Texture Analyzer using two T Bolts, Washers and Thumb Nuts, which slide into the T Slot along the base of the CT3. Untighten the Table Locking Screw (3) to move the Table Assembly (1) up and down. Additional upward movement of the Table Assembly is possible by rotating it in a counter-clockwise direction. Tighten the locking nut underneath the Table Assembly to secure the position.

Adjustment of the table height is made in order to position the sample material as close to the test probe as possible. This will allow the operator to save time when performing multiple tests on the same material.

Additional or replacement items can be ordered using the part numbers shown in the Parts List.



PARTS LIST			
ITEM	PART NUMBER	DESCRIPTION	QTY
1	TIA-2005	ASSEMBLY, TABLE	1
2	TA-TBLT	TABLE BOLT NUT	2
3	TA-RT-4Y	TABLE LOCKING SCREW	1