

Installation Instructions for Texture Accessory Part TA-BT-KIT

TA-BT-KIT – Fixture Base Table

The Fixture Base Table is used to secure and position texture fixtures. The Parts List identifies the components that come with the kit. Part numbers, descriptions and quantities of each are listed.

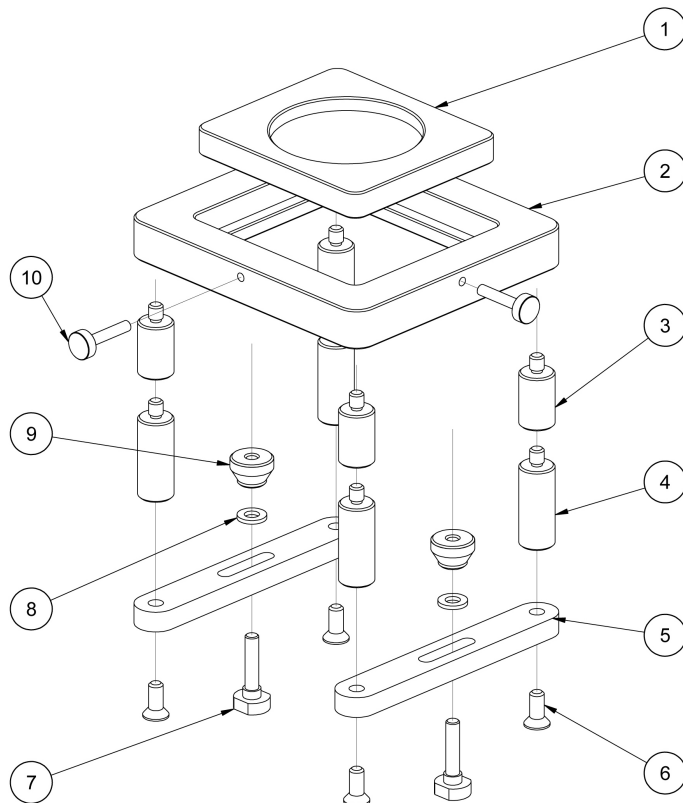
The Fixture Base Table comes assembled with four 1-inch (P/N TA-BT-3KY) and 1½-inch (P/N TA-BT-2KY) legs already in position. The assembly drawing shows how these parts go together.

The Fixture Base Table attaches to the CT3 Texture Analyzer using two T-Bolts (P/N TA-BT-6KY), Two Washers (8) and Two Thumb Nuts (P/N TA-TBLT). The T-Bolts slide into the T-shaped channel in the base of the CT3. The Base Table Insert (P/N TA-BT-5) is flat on one side and has a counter bore on the other side as shown in the image; either side can be used for placement of test samples. The Base Table Insert can be removed to allow other fixtures, such as the TA-DEC Dual Extrusion Cell, to be mounted on top of the Fixture Base Table.

Also included with the Fixture Base Table are four table legs of 2” length (P/N TA-BT-7KY) and four table legs of 4” length (P/N TA-BT-8KY). The total height of the Fixture Base Table with all legs in position is 9½ inches (244 mm).

Adjustment of the table height is made in order to position the sample material as close to the test probe as possible. This will allow the operator to save time when performing multiple tests on the same material.

Additional or replacement items can be ordered using the part numbers shown throughout this document.



PARTS LIST		
ITEM	DESCRIPTION	QTY
1	BASE TABLE INSERT	1
2	BASE TABLE, FIXTURE PLATE	1
3	TABLE LEG, 1”	4
4	TABLE LEG, 1 ½”	4
5	BASE TABLE, FOOT	2
6	SCREW ¼-20x5/8 PHIL FLT HD 18-8 SS	4
7	T-BOLT	2
8	WASHER, FLAT, M6, 18-8 SS	2
9	THUMB NUT	2
10	THUMB SCREW, LOW HD 10-32 x 1”, 18-8 SS	2
11	TABLE LEG, 2”	4
12	TABLE LEG, 4”	4